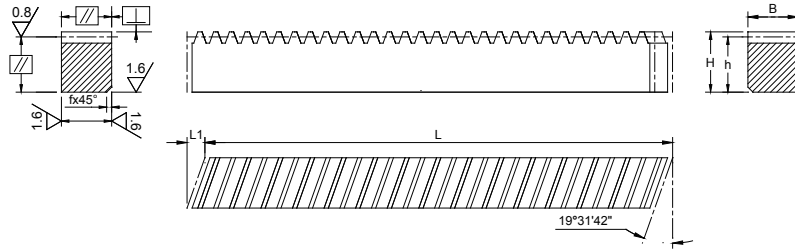


Module System										
Helical Tooth										
	Helical Racks	Ground	Steel	Induction Hardened	Ends Machined	Holes	M2-10	GB 6+		2
	Helical Racks	Ground	Steel	Induction Hardened	Ends Machined		M2-10	GB 6+		3
	Helical Racks	Milled	Steel	Quenched and Tempered	Ends Machined	Holes	M2-5	GB 8+		4
	Helical Racks	Milled	Steel	Quenched and Tempered	Ends Machined		M2-5	GB 8+		5
	Helical Racks	Milled	Steel		Ends Machined	Holes	M2-10	GB 9		6
	Helical Racks	Milled	Steel		Ends Machined		M2-10	GB 9		7
	Helical Racks	Milled	Steel	Induction Hardened	Ends Machined	Holes	M2-6	GB 10		8
	Helical Racks	Milled	Steel	Induction Hardened	Ends Machined		M2-6	GB 10		9
Straight Tooth										
	Racks	Ground	Steel	Induction Hardened	Ends Machined	Holes	M2-10	GB 6+		10
	Racks	Ground	Steel	Induction Hardened	Ends Machined		M2-10	GB 6+		11
	Racks	Milled	Steel	Quenched and Tempered	Ends Machined	Holes	M2-5	GB 8+		12
	Racks	Milled	Steel	Quenched and Tempered	Ends Machined		M2-5	GB 8+		13
	Racks	Milled	Steel		Ends Machined		M1-10	GB 9		14
	Racks	Milled	Steel				M1-8	GB 9		15
	Racks	Milled	Steel	Induction Hardened	Ends Machined	Holes	M2-6	GB 10		16
	Racks	Milled	Steel	Induction Hardened	Ends Machined		M2-6	GB 10		17
	Racks	Milled	Brass				M0.3-1.25	GB 8		18
	Racks	Milled	Stainless Steel		Ends Machined	Holes	M1.5-4	GB 9		19
	Racks	Milled	Stainless Steel		Ends Machined		M1.5-4	GB 9		20
	Racks	Milled	Stainless Steel				M0.5-4	GB 9		21
	Round Racks	Milled	Steel	Quenched and Tempered	Ends Machined		M1-5	GB 8+		22
	Round Racks	Milled	Steel	Quenched and Tempered			M1-5	GB 8		23
	Round Racks	Milled	Steel		Ends Machined		M1-5	GB 9		24
	Round Racks	Milled	Stainless Steel		Ends Machined		M1-3	GB 8+		25
Diametral Pitch System										
	DP Racks	Milled	Steel				DP3-24	14.5°		26
	DP Racks	Milled	Steel	Standard			DP3-20	20°		28
	DP Racks	Milled	Steel	Width Face			DP4-20	20°		29
Circular Pitch System										
	CP Racks	Milled	Steel	Stress Relief Annealing	Ends Machined	Holes	CP5-20	GB 8		30
	CP Racks	Milled	Steel	Stress Relief Annealing	Ends Machined		CP5-20	GB 8		31
	CP Racks	Milled	Steel	Stress Relief Annealing			CP2.5-20	GB 8		32
	CP Racks	Milled	Steel	Quenched and Tempered	Ends Machined		CP5-10	GB 8		33
	CP Racks	Milled	Stainless Steel		Ends Machined	Holes	CP5-10	GB 8		34
	CP Racks	Milled	Stainless Steel		Ends Machined		CP5-10	GB 8		35
	CP Racks	Milled	Steel		Ends Machined		CP5-10	GB 9		36
	CP Racks	Milled	Steel	Induction Hardened	Ends Machined	Holes	CP10-25	GB 9		37
	CP Racks	Milled	Steel	Induction Hardened	Ends Machined		CP10-25	GB 9		38



Specifications	
Pressure Angle	20°
Hand of Helix	Right
Helix Angle	19°31'42"
Material	C45
Heat Treatment	-
Tooth Surface Treatment	Induction Hardened
Tooth Surface Finish	Ground
Precision Grade	GB 6+
Ends Machined for Continous Linking	

Racks #	Module	L	L1	B	H	h	No. of Teeth	f	±f _{pt} (μm)	F _p (μm)	F _{p300} (μm)	Weight (kg)
SR2-020LGE	2	200.00	8.50	24	24	22	30	*				0.82
SR2-100RGE	2	1000.00	8.50	24	24	22	150	2	10	60	40	4.10
SR3-020LGE	3	200.00	10.30	29	29	26	20	*				1.18
SR3-100RGE	3	1000.00	10.30	29	29	26	100	2	10	60	40	5.90
SR4-020LGE	4	200.00	13.80	39	39	35	15	*				2.14
SR4-100RGE	4	1000.00	13.80	39	39	35	75	3	14	60	40	10.70
SR5-020LGE	5	200.00	17.40	49	39	34	12	*				2.60
SR5-100RGE	5	1000.00	17.40	49	39	34	60	3	14	60	40	13.00
SR6-020LGE	6	200.00	20.90	59	49	43	10	*				3.62
SR6-100RGE	6	1000.00	20.90	59	49	43	50	3	14	60	40	18.10
SR8-020LGE	8	213.33	28.00	79	79	71	8	*				8.50
SR8-100RGE	8	960.00	28.00	79	79	71	36	3	16	60	40	42.50
SR10-020L GE	10	233.33	28.02	79	79	69	7	*				13.74
SR10-100RGE	10	1000.00	35.11	99	99	89	30	3	16	60	40	68.72

Note: 1. ±f_{pt}: Single pitch deviation.

2. F_p: Total cumulative pitch deviation.

3. F_{p300}: Total Pitch Error, i.e. The maximum permissible deviation (per 300mm) of measured length of the rack compared to the theoretical length L₃₀₀.

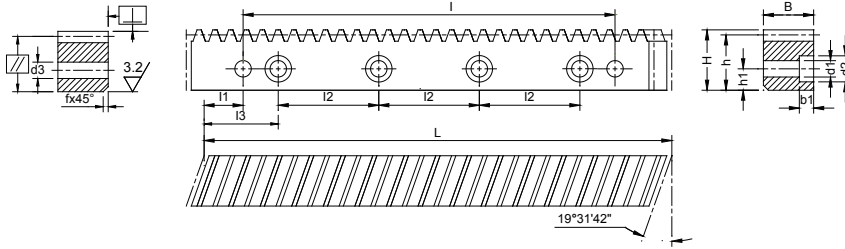
4. GB 6+ means the prcision grade of racks are better than GB 6.

5. * means the joining gauge rack, left hand, used for the mounting of the right hand racks.

Note:

1 All dimensions are in inches.

2 Dimensions and other engineering data are subject to change. Certified specifications are available on request.



Specifications	
Pressure Angle	20°
Hand of Helix	Right
Helix Angle	19°31'42"
Material	C45
Heat Treatment	Quenched and Tempered
Tooth Surface Treatment	-
Tooth Surface Finish	Milled
Precision Grade	GB 8+
Ends Machined for Continuous Linking	

Racks #	Module	L	L1	B	H	h	No.of Teeth	l	l1	l2	l3	b1	h1	d1	d2	d3	f	No.of Holes	±fpt (μm)	Fp (μm)	Fp 300 (μm)	Weight (kg)
SR2-100RQB	2	1000.00	8.9	25	24	22	150	936.6	31.7	125	62.5	7	8	7	11	5.7	2	8	20	110	70	4.30
SR3-100RQB	3	1000.00	10.6	30	29	26	100	930.0	35.0	125	62.5	9	9	10	15	7.7	2	8	20	110	70	6.10
SR4-100RQB	4	1000.00	14.2	40	39	35	75	933.4	33.3	125	62.5	9	12	10	15	7.7	2	8	28	110	70	10.90
SR5-100RQB	5	1000.00	17.4	50	39	34	60	925.0	37.5	125	62.5	13	12	14	20	11.7	3	8	28	110	70	13.00

Note: 1. ±fpt: Single pitch deviation.

2. Fp: Total cumulative pitch deviation.

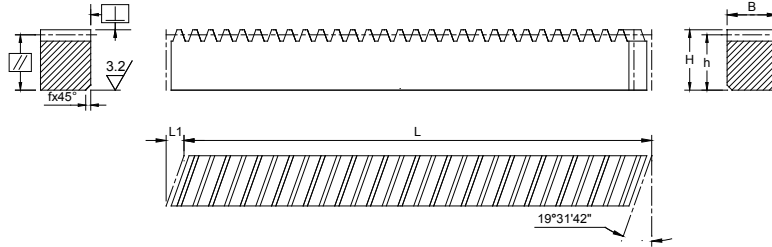
3. Fp300: Total Pitch Error, i.e. The maximum permissible deviation (per 300mm) of measured length of the rack compared to the theoretical length L300.

4. GB 8+ means the precision grade of racks are better than GB 8.

Note:

1 All dimensions are in inches.

2 Dimensions and other engineering data are subject to change. Certified specifications are available on request.



Specifications	
Pressure Angle	20°
Hand of Helix	Right
Helix Angle	19°31'42"
Material	C45
Heat Treatment	Quenched and Tempered
Tooth Surface Treatment	-
Tooth Surface Finish	Milled
Precision Grade	GB 8+
10 for Continuous Linking	

Racks #	Module	L	L1	B	H	h	No. of Teeth	f	±f _{pt} (μm)	F _p (μm)	F _p 300 (μm)	Weight (kg)
SR2-020LQE	2	200.00	8.9	25	24	22	30	*				0.86
SR2-100RQE	2	1000.00	8.9	25	24	22	150	2	20	110	70	4.30
SR3-020LQE	3	200.00	10.6	30	29	26	20	*				1.22
SR3-100RQE	3	1000.00	10.6	30	29	26	100	2	20	110	70	6.10
SR4-020LQE	4	200.00	14.2	40	39	35	15	*				2.18
SR4-100RQE	4	1000.00	14.2	40	39	35	75	2	28	110	70	10.90
SR5-020LQE	5	200.00	17.4	50	39	34	12	*				2.60
SR5-100RQE	5	1000.00	17.4	50	39	34	60	3	28	110	70	13.00

Note: 1. ±f_{pt}: Single pitch deviation.

2. F_p: Total cumulative pitch deviation.

3. F_{p300}: Total Pitch Error, i.e. The maximum permissible deviation (per 300mm) of measured length of the rack compared to the theoretical length L₃₀₀.

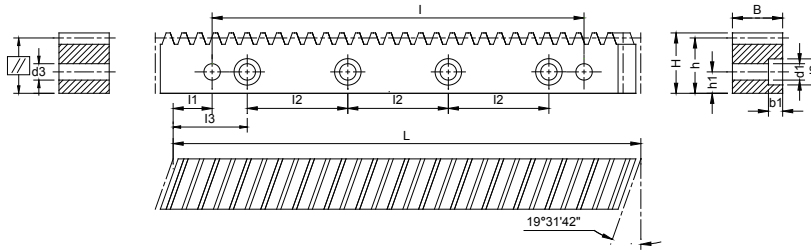
4. GB 8+ means the precision grade of racks are better than GB 8.

5. * means the joining gauge rack, left hand, used for the mounting of the right hand racks.

Note:

1 All dimensions are in inches.

2 Dimensions and other engineering data are subject to change. Certified specifications are available on request.

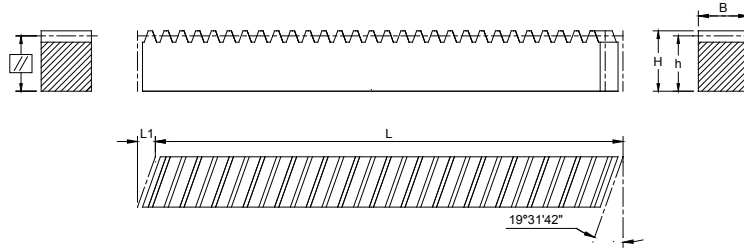


Specifications	
Pressure Angle	20°
Hand of Helix	Right
Helix Angle	19°31'42"
Material	C45
Heat Treatment	-
Tooth Surface Treatment	-
Tooth Surface Finish	Milled
Precision Grade	GB 9
Ends Machined for Continous Linking	

Racks #	Module	L	L1	B	H	h	No.of Teeth	l	l1	l2	l3	b1	h1	d1	d2	d3	f	No.of Holes	±fpt (μm)	Fp (μm)	Weight (kg)
SR2-050RB	2	500.00	9.2	26	24	22	75	436.6	31.7	125	62.5	7	8	7	11	5.7	-	4	28	212	2.20
SR2-100RB	2	1000.00	9.2	26	24	22	150	936.6	31.7	125	62.5	7	8	7	11	5.7	-	8	28	265	4.40
SR2-200RB	2	2000.00	9.2	26	24	22	300	1936.6	31.7	125	62.5	7	8	7	11	5.7	-	16	28	400	8.80
SR3-050RB	3	500.00	11.0	31	29	26	50	430.0	35.0	125	62.5	9	9	10	15	7.7	-	4	28	212	3.10
SR3-100RB	3	1000.00	11.0	31	29	26	100	930.0	35.0	125	62.5	9	9	10	15	7.7	-	8	28	265	6.20
SR3-200RB	3	2000.00	11.0	31	29	26	200	1930.0	35.0	125	62.5	9	9	10	15	7.7	-	16	28	400	12.50
SR4-050RB	4	506.67	14.5	41	39	35	38	433.0	33.3	125	62.5	9	12	10	15	7.7	-	4	40	212	5.60
SR4-100RB	4	1000.00	14.5	41	39	35	75	933.4	33.3	125	62.5	9	12	10	15	7.7	-	8	40	265	11.10
SR4-200RB	4	2000.00	14.5	41	39	35	150	1933.4	33.3	125	62.5	9	12	10	15	7.7	-	16	40	400	22.20
SR5-100RB	5	1000.00	17.7	50	39	34	60	925.0	37.5	125	62.5	13	12	14	20	11.7	-	8	40	265	13.26
SR5-200RB	5	2000.00	17.7	50	39	34	120	1925.0	37.5	125	62.5	13	12	14	20	11.7	-	16	40	400	26.52
SR6-100RB	6	1000.00	21.3	60	49	43	50	925.0	37.5	125	62.5	17	16	18	26	15.7	-	8	40	265	20.12
SR6-200RB	6	2000.00	21.3	60	49	43	100	1925.0	37.5	125	62.5	17	16	18	26	15.7	-	16	40	400	40.24
SR8-100RB	8	960.00	28.7	81	79	71	36	720.0	120.0	120	60.0	21	25	25	33	19.7	-	8	45	265	44.85
SR8-200RB	8	1920.00	28.7	81	79	71	72	1680.0	120.0	120	60.0	21	25	22	33	19.7	-	16	45	400	89.71
SR10-100RB	10	1000.00	35.5	100	99	89	30	750.0	125.0	125	62.5	32	32	33	48	19.7	-	8	45	265	69.80

Note: 1. ±fpt: Single pitch deviation.
 2. Fp: Total cumulative pitch deviation.

Note:
 1 All dimensions are in inches.
 2 Dimensions and other engineering data are subject to change. Certified specifications are available on request.

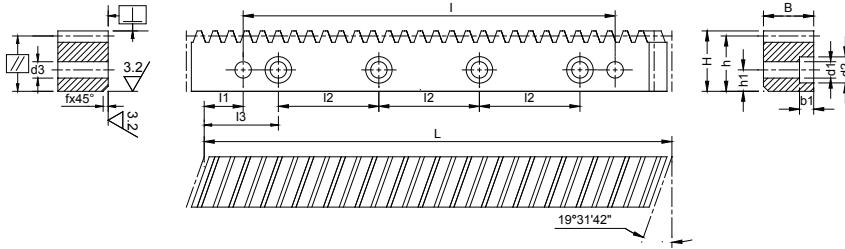


Specifications	
Pressure Angle	20°
Hand of Helix	Right
Helix Angle	19°31'42"
Material	C45
Heat Treatment	-
Tooth Surface Treatment	-
Tooth Surface Finish	Milled
Precision Grade	GB 9
Ends Machined for Continous Linking	

Racks #	Module	L	L1	B	H	h	No. of Teeth	f	±fpt (μm)	Fp (μm)	Weight (kg)
SR2-020LE	2	200.00	8.5	26	24	22	30	*	28	150	0.88
SR2-050RE	2	500.00	9.2	26	24	22	75	-	28	212	2.20
SR2-100RE	2	1000.00	9.2	26	24	22	150	-	28	265	4.40
SR2-200RE	2	2000.00	9.2	26	24	22	300	-	28	400	8.80
SR3-020LE	3	200.00	10.3	31	29	26	20	*	28	150	1.24
SR3-050RE	3	500.00	11.0	31	29	26	50	-	28	212	3.10
SR3-100RE	3	1000.00	11.0	31	29	26	100	-	28	265	6.20
SR3-200RE	3	2000.00	11.0	31	29	26	200	-	28	400	12.50
SR4-020LE	4	200.00	13.8	41	39	35	15	*	40	150	2.22
SR4-050RE	4	506.67	14.5	41	39	35	38	-	40	212	5.60
SR4-100RE	4	1000.00	14.5	41	39	35	75	-	40	265	11.10
SR4-200RE	4	2000.00	14.5	41	39	35	150	-	40	400	22.20
SR5-020LE	5	200.00	17.4	50	39	34	12	*	40	150	2.65
SR5-100RE	5	1000.00	17.7	50	39	34	60	-	40	265	13.26
SR5-200RE	5	2000.00	17.7	50	39	34	120	-	40	400	26.52
SR6-020LE	6	200.00	20.9	60	49	43	10	*	40	150	4.02
SR6-100RE	6	1000.00	21.3	60	49	43	50	-	40	265	20.12
SR6-200RE	6	2000.00	21.3	60	49	43	100	-	40	400	40.24
SR8-020LE	8	213.33	28.0	81	79	71	8	*	45	150	8.97
SR8-100RE	8	960.00	28.7	81	79	71	36	-	45	265	44.85
SR8-200RE	8	1920.00	28.7	81	79	71	72	-	45	400	89.71
SR10-020LE	10	233.33	28.0	100	99	89	7	*	45	150	13.96
SR10-100RE	10	1000.00	35.5	100	99	89	30	-	45	265	69.80

Note: 1. ±fpt: Single pitch deviation.
 2. Fp: Total cumulative pitch deviation.
 3. * means the joining gauge rack, left hand, used for the mounting of the right hand racks.

Note:
 1 All dimensions are in inches.
 2 Dimensions and other engineering data are subject to change. Certified specifications are available on request.

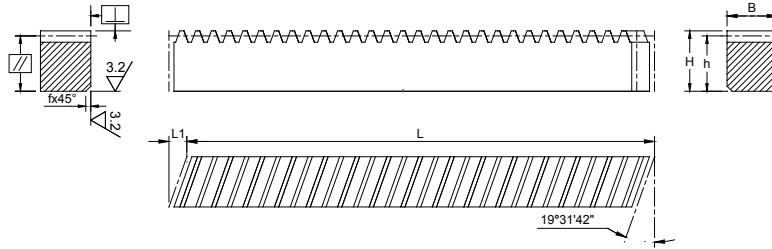


Specifications	
Pressure Angle	20°
Hand of Helix	Right
Helix Angle	19°31'42"
Material	C45
Heat Treatment	-
Tooth Surface Treatment	Induction Hardened
Tooth Surface Finish	Milled
Precision Grade	GB 10
Ends Machined for Continous Linking	

Racks #	Module	L	L1	B	H	h	No.of Teeth	l	l1	l2	l3	b1	h1	d1	d2	d3	f	No.of Holes	±f _{pt} (μm)	F _p (μm)	Weight (kg)
SR2-050RHB	2	500.00	8.5	24	24	22	75	436.6	31.7	125	62.5	7	8	7	11	5.7	2	4	40	300	2.10
SR2-100RHB	2	1000.00	8.5	24	24	22	150	936.6	31.7	125	62.5	7	8	7	11	5.7	2	8	40	475	4.20
SR3-050RHB	3	500.00	10.3	29	29	26	50	430.0	35.0	125	62.5	9	9	10	15	7.7	2	4	40	300	3.00
SR3-100RHB	3	1000.00	10.3	29	29	26	100	930.0	35.0	125	62.5	9	9	10	15	7.7	2	8	40	375	6.00
SR4-050RHB	4	506.67	13.8	39	39	35	38	433.0	33.3	125	62.5	9	12	10	15	7.7	3	4	56	300	5.30
SR4-100RHB	4	1000.00	13.8	39	39	35	75	933.4	33.3	125	62.5	9	12	10	15	7.7	3	8	56	375	10.50
SR5-050RHB	5	500.00	17.4	49	49	34	30	425.0	37.5	125	62.5	13	12	14	20	11.7	3	4	56	300	6.50
SR5-100RHB	5	1000.00	17.4	49	49	34	60	925.0	37.5	125	62.5	13	12	14	20	11.7	3	8	56	375	13.00
SR6-050RHB	6	500.00	20.9	59	49	43	25	425.0	37.5	125	62.5	17	16	18	26	15.7	3	4	56	300	9.90
SR6-100RHB	6	1000.00	20.9	59	49	43	50	925.0	37.5	125	62.5	17	16	18	26	15.7	3	8	56	375	19.80

Note: 1. ±f_{pt}: Single pitch deviation.
 2. F_p: Total cumulative pitch deviation.

Note:
 1 All dimensions are in inches.
 2 Dimensions and other engineering data are subject to change. Certified specifications are available on request.



Specifications	
Pressure Angle	20°
Hand of Helix	Right
Helix Angle	19°31'42"
Material	C45
Heat Treatment	-
Tooth Surface Treatment	Induction Hardened
Tooth Surface Finish	Milled
Precision Grade	GB 10
Ends Machined for Continous Linking	

Racks #	Module	L	L1	B	H	h	No. of Teeth	f	±f _{pt} (μm)	F _p (μm)	Weight (kg)
SR2-020LHE	2	200.00	8.5	24	24	22	30	*	40	210	0.85
SR2-050RHE	2	500.00	8.5	24	24	22	75	2	40	300	2.10
SR2-100RHE	2	1000.00	8.5	24	24	22	150	2	40	375	4.20
SR3-020LHE	3	200.00	10.3	29	29	26	20	*	40	210	1.80
SR3-050RHE	3	500.00	10.3	29	29	26	50	2	40	300	3.00
SR3-100RHE	3	1000.00	10.3	29	29	26	100	2	40	375	6.00
SR4-020LHE	4	200.00	13.8	39	39	35	15	*	56	210	2.70
SR4-050RHE	4	506.67	13.8	39	39	35	38	3	56	300	5.30
SR4-100RHE	4	1000.00	13.8	39	39	35	75	3	56	375	10.50
SR5-020LHE	5	200.00	17.4	49	39	34	12	*	56	210	3.00
SR5-050RHE	5	500.00	17.4	49	39	34	30	3	56	300	6.50
SR5-100RHE	5	1000.00	17.4	49	39	34	60	3	56	375	13.00
SR6-020LHE	6	200.00	20.9	59	49	43	10	*	56	210	4.40
SR6-050RHE	6	500.00	20.9	59	49	43	25	3	56	300	9.90
SR6-100RHE	6	1000.00	20.9	59	49	43	50	3	56	375	19.80

Note: 1. ±f_{pt}: Single pitch deviation.

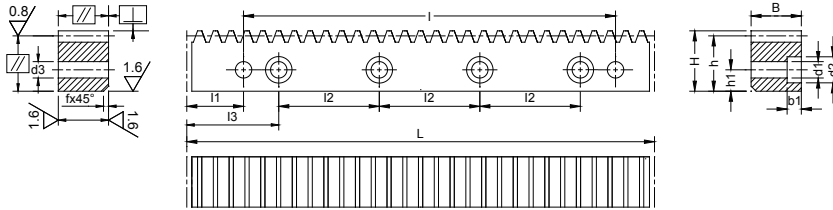
2. F_p: Total cumulative pitch deviation.

3. * means the joining gauge rack, left hand, used for the mounting of the right hand racks.

Note:

1 All dimensions are in inches.

2 Dimensions and other engineering data are subject to change. Certified specifications are available on request.



Specifications	
Pressure Angle	20°
Material	C45
Heat Treatment	-
Tooth Surface Treatment	Induction Hardened
Tooth Surface Finish	Ground
Precision Grade	GB 6+
Ends Machined for Continuous Linking	

Racks #	Module	L	B	H	h	No. of Teeth	l	l1	l2	l3	b1	h1	d1	d2	d3	f	No. of Holes	±f _{pt} (μm)	F _p (μm)	F _{p300} (μm)	Weight (kg)
SR2-100GB	2	1005.30	24	24	22	160	942.70	31.3	125.66	62.8	7	8	7	11	5.7	2	8	10	60	40	4.20
SR3-100GB	3	1017.90	29	29	26	108	949.10	34.4	127.23	63.6	9	9	10	15	7.7	2	8	10	60	40	6.00
SR4-100GB	4	1005.30	39	39	35	80	930.30	37.5	125.66	62.8	9	12	10	15	7.7	3	8	14	60	40	10.50
SR5-100GB	5	1005.30	49	39	34	64	945.00	30.1	125.66	62.8	13	12	14	20	11.7	3	8	14	60	40	13.40
SR6-100GB	6	1017.80	59	49	43	54	955.00	31.4	127.23	63.6	17	16	18	26	15.7	3	8	14	60	40	20.20
SR8-100GB	8	1005.30	79	79	71	40	952.00	26.6	125.66	62.8	21	25	22	33	19.7	3	8	16	60	40	44.76
SR10-100GB	10	1005.30	99	99	89	32	753.96	125.66	125.66	62.83	32	32	33	48	19.7	3	8	16	60	40	68.72

Note: 1. ±f_{pt}: Single pitch deviation.

2. F_p: Total cumulative pitch deviation.

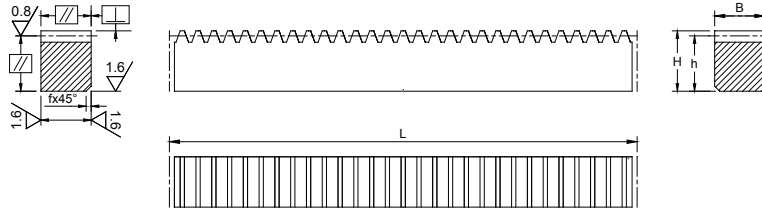
3. F_{p300}: Total Pitch Error, i.e. The maximum permissible deviation (per 300mm) of measured length of the rack compared to the theoretical length L300.

4. GB 6+ means the precision grade of racks are better than GB 6.

Note:

1 All dimensions are in inches.

2 Dimensions and other engineering data are subject to change. Certified specifications are available on request.



Specifications	
Pressure Angle	20°
Material	C45
Heat Treatment	-
Tooth Surface Treatment	Induction Hardened
Tooth Surface Finish	Ground
Precision Grade	GB 6+
Ends Machined for Continuous Linking	

Racks #	Module	L	B	H	h	No. of Teeth	f	±f _{pt} (μm)	F _p (μm)	F _p 300 (μm)	Weight (kg)
SR2-100GE	2	1005.30	24	24	22	160	2	10	60	40	4.20
SR3-100GE	3	1017.90	29	29	26	108	2	10	60	40	6.00
SR4-100GE	4	1005.30	39	39	35	80	3	14	60	40	10.50
SR5-100GE	5	1005.30	49	39	34	64	3	14	60	40	13.40
SR6-100GE	6	1017.80	59	49	43	54	3	14	60	40	20.20
SR8-100GE	8	1005.30	79	79	71	40	3	16	60	40	44.76
SR10-100GE	10	1005.30	99	99	89	32	3	16	60	40	68.72

Note: 1. ±f_{pt}: Single pitch deviation.

2. F_p: Total cumulative pitch deviation.

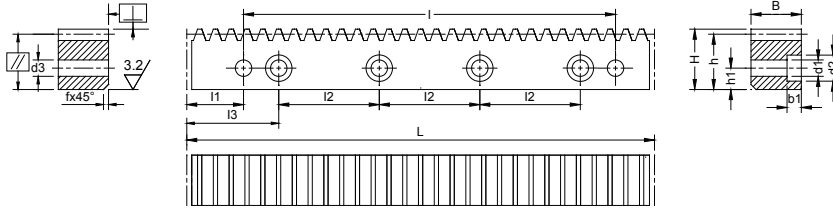
3. F_p300: Total Pitch Error, i.e. The maximum permissible deviation (per 300mm) of measured length of the rack compared to the theoretical length L300.

4. GB 6+ means the precision grade of racks are better than GB 6.

Note:

1 All dimensions are in inches.

2 Dimensions and other engineering data are subject to change. Certified specifications are available on request.



Specifications	
Pressure Angle	20°
Material	C45
Heat Treatment	Quenched and Tempered
Tooth Surface Treatment	-
Tooth Surface Finish	Milled
Precision Grade	GB 8+
Ends Machined for Continuous Linking	

Racks #	Module	L	B	H	h	No. of Teeth	l	l1	l2	l3	b1	h1	d1	d2	d3	f	No. of Holes	±fpt (μm)	Fp (μm)	Fp 300 (μm)	Weight (kg)
SR2-100QB	2	1005.31	25	24	22	160	942.7	31.3	125.66	62.83	7	8	7	11	5.7	2	8	20	110	70	4.30
SR3-100QB	3	1017.88	30	29	26	108	949.1	34.4	127.23	63.62	9	9	10	15	7.7	2	8	20	110	70	6.20
SR4-100QB	4	1005.31	40	39	35	80	930.3	37.5	125.66	62.83	9	12	10	15	7.7	3	8	28	110	70	11.00
SR5-100QB	5	1005.31	49	39	34	64	945.0	30.2	125.66	62.83	13	12	14	20	11.7	3	8	28	110	70	13.60

Note: 1. ±fpt: Single pitch deviation.

2. Fp: Total cumulative pitch deviation.

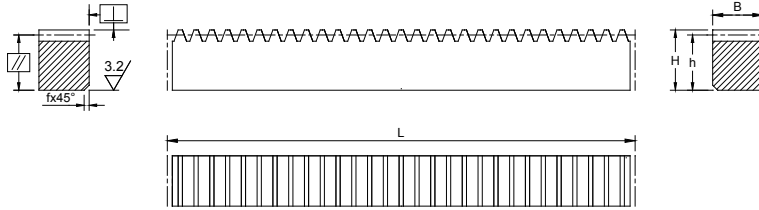
3. Fp300: Total Pitch Error, i.e. The maximum permissible deviation (per 300mm) of measured length of the rack compared to the theoretical length L300.

4. GB 8+ means the precision grade of racks are better than GB 8.

Note:

1 All dimensions are in inches.

2 Dimensions and other engineering data are subject to change. Certified specifications are available on request.



Specifications	
Pressure Angle	20°
Material	C45
Heat Treatment	Quenched and Tempered
Tooth Surface Treatment	-
Tooth Surface Finish	Milled
Precision Grade	GB 8+
Ends Machined for Continuous Linking	

Racks #	Module	L	B	H	h	No. of Teeth	f	±f _{pt} (μm)	F _p (μm)	F _p 300 (μm)	Weight (kg)
SR2-100QE	2	1005.31	25	24	22	160	2	20	110	70	4.30
SR3-100QE	3	1017.88	30	29	26	108	2	20	110	70	6.20
SR4-100QE	4	1005.31	40	39	35	80	3	28	110	70	11.00
SR5-100QE	5	1005.31	49	39	34	64	3	28	110	70	13.60

Note: 1. ±f_{pt}: Single pitch deviation.

2. F_p: Total cumulative pitch deviation.

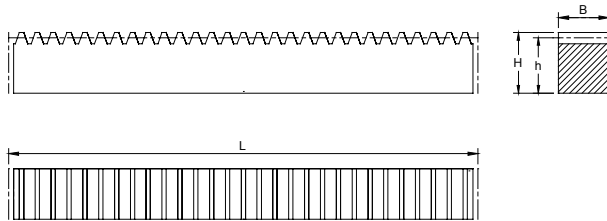
3. F_{p300}: Total Pitch Error, i.e. The maximum permissible deviation (per 300mm) of measured length of the rack compared to the theoretical length L₃₀₀.

4. GB 8+ means the precision grade of racks are better than GB 8.

Note:

1 All dimensions are in inches.

2 Dimensions and other engineering data are subject to change. Certified specifications are available on request.



Specifications	
Pressure Angle	20°
Material	C45
Heat Treatment	-
Tooth Surface Treatment	-
Tooth Surface Finish	Milled
Precision Grade	GB 9
Ends Machined for Continous Linking	

Racks #	Module	L	B	H	h	No. of Teeth	f	±f _{pt} (μm)	F _p (μm)	Weight (kg)
SR1-020E	1	251.33	15	15	14	80	-	28	150	0.41
SR1-050E	1	499.51	15	15	14	159	-	28	212	0.82
SR1-100E	1	999.03	15	15	14	318	-	28	265	1.64
SR1.5-020E	1.5	249.76	17	17	15.5	53	-	28	150	0.51
SR1.5-050E	1.5	499.51	17	17	15.5	106	-	28	212	1.03
SR1.5-100E	1.5	999.03	17	17	15.5	212	-	28	265	2.06
SR1.5-200E	1.5	1998.05	17	17	15.5	424	-	28	400	4.11
SR2-020E	2	251.33	20	20	18	40	-	28	150	0.71
SR2-050E	2	502.65	20	20	18	80	-	28	212	1.41
SR2-100E	2	999.03	20	20	18	159	-	28	265	2.81
SR2-150E	2	1507.96	20	20	18	240	-	28	335	4.25
SR2-200E	2	1998.05	20	20	18	318	-	28	400	5.62
SR2.5-020E	2.5	251.33	25	25	22.5	32	-	28	150	1.1
SR2.5-050E	2.5	502.65	25	25	22.5	64	-	28	212	2.21
SR2.5-100E	2.5	997.46	25	25	22.5	127	-	28	265	4.38
SR2.5-200E	2.5	2002.77	25	25	22.5	255	-	28	400	8.8
SR3-020E	3	254.47	30	30	27	27	-	28	150	1.61
SR3-050E	3	508.94	30	30	27	54	-	28	212	3.22
SR3-100E	3	1017.88	30	30	27	108	-	28	335	6.44
SR3-150E	3	1526.81	30	30	27	162	-	28	335	9.66
SR3-200E	3	2035.75	30	30	27	216	-	28	400	12.88
SR4-020E	4	251.33	40	40	36	20	-	40	150	2.83
SR4-050E	4	502.65	40	40	36	40	-	40	212	5.65
SR4-100E	4	1005.31	40	40	36	80	-	40	335	11.31
SR4-150E	4	1507.96	40	40	36	120	-	40	335	19.97
SR4-200E	4	2010.62	40	40	36	160	-	40	400	22.61
SR5-020E	5	251.33	50	40	35	16	-	40	150	3.44
SR5-050E	5	502.65	50	40	35	32	-	40	212	6.87
SR5-100E	5	1005.31	50	40	35	64	-	40	335	13.74
SR5-150E	5	1507.96	50	40	35	96	-	40	335	20.4
SR5-200E	5	2010.62	50	40	35	128	-	40	400	27.48
SR6-020E	6	245.04	60	60	54	13	-	40	150	4.83
SR6-050E	6	508.94	60	50	44	27	-	40	212	10.49
SR6-100E	6	1017.88	60	50	44	54	-	40	335	20.99
SR6-200E	6	2035.75	60	50	44	108	-	40	400	41.97
SR8-020E	8	251.32	80	79.5	71.5	10	-	45	150	11.1
SR8-100E	8	1005.31	80	79.5	71.5	40	-	45	335	44.63
SR8-200E	8	2010.62	80	79.5	71.5	80	-	45	400	89.26
SR10-020E	10	219.91	100	100	90	7	-	45	150	10.67
SR10-100E	10	1005.3	100	100	90	32	-	45	335	70.6

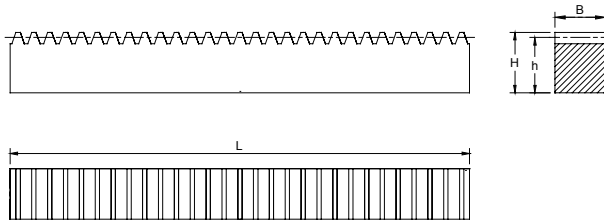
Note: 1. ±f_{pt}: Single pitch deviation.

2. F_p: Total cumulative pitch deviation.

Note:

1 All dimensions are in inches.

2 Dimensions and other engineering data are subject to change. Certified specifications are available on request.

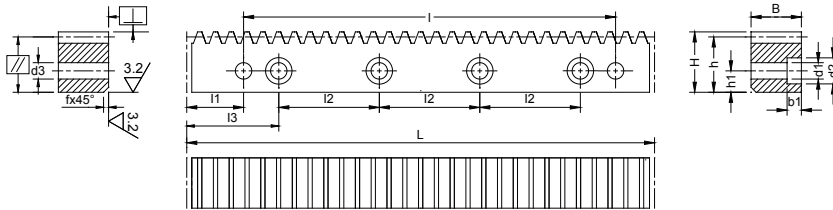


Specifications	
Pressure Angle	20°
Material	C45
Heat Treatment	-
Tooth Surface Treatment	-
Tooth Surface Finish	Milled
Precision Grade	GB 9
Ends Not Machined	

Racks #	Module	L	B	H	h	f	±fpt (μm)	Fp (μm)	Weight (kg)
SR1-020	1	250	10	9.80 ± 0.10	8.80	-	28	150	0.17
SR1-050	1	500	10	9.80 ± 0.10	8.80	-	28	212	0.34
SR1-100	1	1000	10	9.80 ± 0.15	8.80	-	28	265	0.68
SR1.5-020	1.5	250	15	14.80 ± 0.10	13.30	-	28	150	0.39
SR1.5-050	1.5	500	15	14.80 ± 0.10	13.30	-	28	212	0.78
SR1.5-100	1.5	1000	15	14.80 ± 0.15	13.30	-	28	265	1.55
SR1.5-200	1.5	2000	15	14.80 ± 0.15	13.30	-	28	400	3.10
SR2-020	2	250	20	19.75 ± 0.10	17.75	-	28	150	0.70
SR2-050	2	500	20	19.75 ± 0.10	17.75	-	28	212	1.40
SR2-100	2	1000	20	19.75 ± 0.15	17.75	-	28	265	2.80
SR2-200	2	2000	20	19.75 ± 0.25	17.75	-	28	400	5.60
SR2.5-020	2.5	250	25	24.75 ± 0.10	22.25	-	28	150	1.05
SR2.5-050	2.5	500	25	24.75 ± 0.10	22.25	-	28	212	2.10
SR2.5-100	2.5	1000	25	24.75 ± 0.15	22.25	-	28	265	4.20
SR2.5-200	2.5	2000	25	24.75 ± 0.25	22.25	-	28	400	8.40
SR3-020	3	250	30	29.75 ± 0.10	26.75	-	28	150	1.55
SR3-050	3	500	30	29.75 ± 0.10	26.75	-	28	212	3.10
SR3-100	3	1000	30	29.75 ± 0.20	26.75	-	28	265	6.20
SR3-200	3	2000	30	29.75 ± 0.30	26.75	-	28	400	12.40
SR4-020	4	250	40	39.70 ± 0.10	35.70	-	40	150	2.75
SR4-050	4	500	40	39.70 ± 0.10	35.70	-	40	212	5.50
SR4-100	4	1000	40	39.70 ± 0.20	35.70	-	40	265	11.00
SR4-200	4	2000	40	39.70 ± 0.30	35.70	-	40	400	22.00
SR5-020	5	250	50	49.70 ± 0.10	44.70	-	40	150	4.30
SR5-050	5	500	50	49.70 ± 0.10	44.70	-	40	212	8.60
SR5-100	5	1000	50	49.70 ± 0.20	44.70	-	40	265	17.20
SR5-200	5	2000	50	49.70 ± 0.30	44.70	-	40	400	34.40
SR6-020	6	250	60	59.65 ± 0.10	53.65	-	40	150	6.15
SR6-050	6	500	60	59.65 ± 0.10	53.65	-	40	212	12.30
SR6-100	6	1000	60	59.65 ± 0.20	53.65	-	40	265	24.50
SR6-200	6	2000	60	59.65 ± 0.30	53.65	-	40	400	49.00
SR8-020	8	250	80	79.60 ± 0.30	71.60	-	45	150	10.70
SR8-050	8	500	80	79.60 ± 0.30	71.60	-	45	212	21.40
SR8-100	8	1000	80	79.60 ± 0.40	71.60	-	45	265	42.70
SR8-200	8	2000	80	79.60 ± 0.50	71.60	-	45	400	85.40

Note: 1. ±fpt: Single pitch deviation.
2. Fp: Total cumulative pitch deviation.

Note:
1 All dimensions are in inches.
2 Dimensions and other engineering data are subject to change. Certified specifications are available on request.



Specifications	
Pressure Angle	20°
Material	C45
Heat Treatment	-
Tooth Surface Treatment	Induction Hardened
Tooth Surface Finish	Milled
Precision Grade	GB 10
Ends Machined for Continuous Linking	

Racks #	Module	L	B	H	h	No. of Teeth	l	l1	l2	l3	b1	h1	d1	d2	d3	f	No. of Holes	±f _{pt} (μm)	F _p (μm)	Weight (kg)
SR2-050HB	2	502.65	24	24	22	80	440.1	31.3	125.66	62.83	7	8	7	11	5.7	2	4	40	300	2.10
SR2-100HB	2	1005.31	24	24	22	160	942.7	31.3	125.66	62.83	7	8	7	11	5.7	2	8	40	475	4.20
SR2-200HB	2	2010.62	24	24	22	320	1948.0	31.3	125.66	62.83	7	8	7	11	5.7	2	16	40	550	8.40
SR3-050HB	3	508.94	29	29	26	54	440.1	34.4	127.23	63.62	9	9	10	15	7.7	2	4	40	300	3.00
SR3-100HB	3	1017.88	29	29	26	108	949.1	34.4	127.23	63.62	9	9	10	15	7.7	2	8	40	475	6.00
SR3-200HB	3	2035.75	29	29	26	216	1967.0	34.4	127.23	63.62	9	9	10	15	7.7	2	16	40	550	12.00
SR4-050HB	4	502.65	39	39	35	40	427.7	37.5	125.66	62.83	9	12	10	15	7.7	3	4	56	300	5.30
SR4-100HB	4	1005.31	39	39	35	80	930.3	37.5	125.66	62.83	9	12	10	15	7.7	3	8	56	475	10.20
SR4-200HB	4	2010.62	39	39	35	160	1935.6	37.5	125.66	62.83	9	12	10	15	7.7	3	16	56	550	20.50
SR5-050HB	5	502.65	49	49	34	32	442.3	30.2	125.66	62.83	13	12	14	20	11.7	3	4	56	300	6.90
SR5-100HB	5	1005.31	49	49	34	64	945.0	30.2	125.66	62.83	13	12	14	20	11.7	3	8	56	475	13.80
SR5-200HB	5	2010.62	49	49	34	128	1950.3	30.2	125.66	62.83	13	12	14	20	11.7	3	16	56	550	27.50
SR6-050HB	6	508.94	59	49	43	27	446.1	31.4	127.23	63.62	17	16	18	26	15.7	3	4	56	300	10.50
SR6-100HB	6	1017.88	59	49	43	54	955.0	31.4	127.23	63.62	17	16	18	26	15.7	3	8	56	475	21.00
SR6-200HB	6	2035.75	59	49	43	108	1972.9	31.4	127.23	63.62	17	16	18	26	15.7	3	16	56	550	42.00

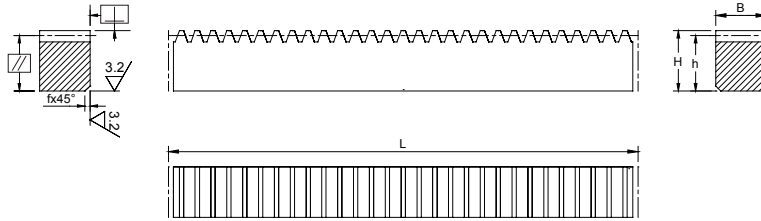
Note: 1. ±f_{pt}: Single pitch deviation.

2. F_p: Total cumulative pitch deviation.

Note:

1 All dimensions are in inches.

2 Dimensions and other engineering data are subject to change. Certified specifications are available on request.

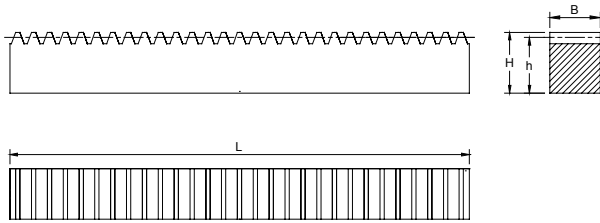


Specifications	
Pressure Angle	20°
Material	C45
Heat Treatment	-
Tooth Surface Treatment	Induction Hardened
Tooth Surface Finish	Milled
Precision Grade	GB 10
Ends Machined for Continuous Linking	

Racks #	Module	L	B	H	h	No. of Teeth	f	±fpt (μm)	Fp (μm)	Weight (kg)
SR2-020HE	2	251.30	24	24	22	40	2	40	210	1.00
SR2-050HE	2	502.65	24	24	22	80	2	40	300	2.10
SR2-100HE	2	1005.31	24	24	22	160	2	40	475	4.20
SR2-200HE	2	2010.62	24	24	22	320	2	40	550	8.40
SR3-020HE	3	254.50	29	29	26	27	2	40	210	1.50
SR3-050HE	3	508.94	29	29	26	54	2	40	300	3.00
SR3-100HE	3	1017.88	29	29	26	108	2	40	475	6.00
SR3-200HE	3	2035.75	29	29	26	216	2	40	550	12.00
SR4-020HE	4	251.30	39	39	35	20	3	56	210	2.60
SR4-050HE	4	502.65	39	39	35	40	3	56	300	5.30
SR4-100HE	4	1005.31	39	39	35	80	3	56	475	10.20
SR4-200HE	4	2010.62	39	39	35	160	3	56	550	20.50
SR5-020HE	5	251.30	49	49	34	16	3	56	210	3.25
SR5-050HE	5	502.65	49	49	34	32	3	56	300	6.90
SR5-100HE	5	1005.31	49	49	34	64	3	56	475	13.80
SR5-200HE	5	2010.62	49	49	34	128	3	56	550	27.50
SR6-020HE	6	245.04	59	49	43	13	3	56	210	4.83
SR6-050HE	6	508.94	59	49	43	27	3	56	300	10.50
SR6-100HE	6	1017.88	59	49	43	54	3	56	475	21.00
SR6-200HE	6	2035.75	59	49	43	108	3	56	550	42.00

Note: 1. ±fpt: Single pitch deviation.
 2. Fp: Total cumulative pitch deviation.

Note:
 1 All dimensions are in inches.
 2 Dimensions and other engineering data are subject to change. Certified specifications are available on request.

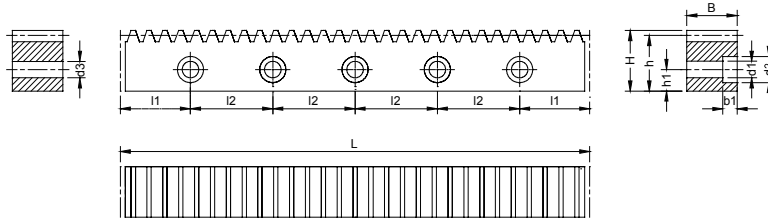


Specifications	
Pressure Angle	20°
Material	Brass
Heat Treatment	-
Tooth Surface Treatment	-
Tooth Surface Finish	Milled
Precision Grade	GB 8
Ends Not Machined	

Racks #	Module	L	B	H	h	No. of Teeth	$\pm f_{pt}$ (μm)	F_p (μm)	Weight (kg)
BR0.3-020-3	0.3	200	3.0	8	7.7	210	16	50	0.03
BR0.5-020-3	0.5	200	3.0	8	7.5	125	16	50	0.03
BR0.5-020-8	0.5	200	8.0	8	7.5	125	16	50	0.09
BR0.5-050-8	0.5	505	8.0	10	9.5	319	16	62	0.28
BR0.75-020-3	0.75	200	3.0	8	7.3	82	16	50	0.03
BR0.75-020-8	0.75	200	8.0	8	7.3	84	16	50	0.09
BR0.75-050-3	0.75	505	3.0	10	9.3	214	16	62	0.10
BR0.75-050-8	0.75	505	8.0	10	9.3	214	16	62	0.28
BR0.8-020-7	0.8	200	7.0	7	6.2	79	16	50	0.06
BR0.8-030-4	0.8	303	4.0	10	9.2	118	16	55	0.08
BR0.8-050-5	0.8	505	5.0	10	9.2	200	16	62	0.17
BR0.8-050-7	0.8	505	7.0	10	9.2	200	16	62	0.24
BR0.8-030-6	1	303	6.0	10	9.0	96	20	105	0.12
BR0.8-030-8	1.25	303	8.0	10	8.8	77	20	105	0.16

Note: 1. $\pm f_{pt}$: Single pitch deviation.
 2. F_p : Total cumulative pitch deviation.

Note:
 1 All dimensions are in inches.
 2 Dimensions and other engineering data are subject to change. Certified specifications are available on request.

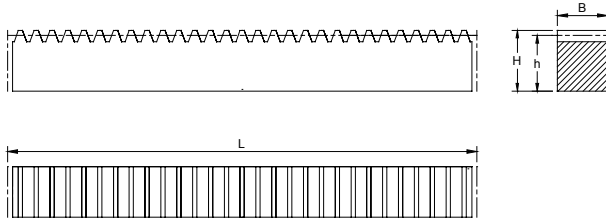


Specifications	
Pressure Angle	20°
Material	SS303
Heat Treatment	-
Tooth Surface Treatment	-
Tooth Surface Finish	Milled
Precision Grade	GB 9
Ends Machined for Continous Linking	

Racks #	Module	L	B	H	h	No.of Teeth	l1	l2	b1	h1	d1	d2	f	No.of Holes	±fpt (μm)	Fp (μm)	Weight (kg)
SSR1.5-100B	1.5	999.03	15	20	18.5	212	49.52	180	6	8	6	10	-	6	28	265	2.10
SSR2-100B	2	1005.31	20	25	23.0	160	52.66	180	7	10	7	11	-	6	28	335	3.50
SSR2.5-100B	2.5	1005.31	25	30	27.5	128	52.66	180	9	12	9	14	-	6	28	335	5.30
SSR3-100B	3	999.03	30	35	32.0	106	49.52	180	11	14	11	17.5	-	6	28	265	7.20
SSR4-100B	4	1005.31	40	45	41.0	80	52.66	180	14	18	14	20	-	6	40	335	12.70

Note: 1. ±fpt: Single pitch deviation.
2. Fp: Total cumulative pitch deviation.

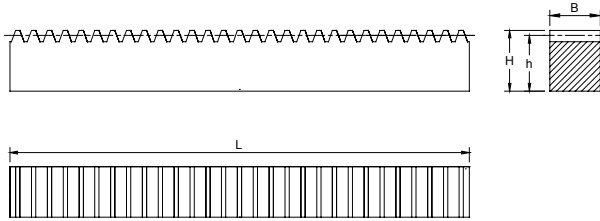
Note:
1 All dimensions are in inches.
2 Dimensions and other engineering data are subject to change. Certified specifications are available on request.



Specifications	
Pressure Angle	20°
Material	SS303
Heat Treatment	-
Tooth Surface Treatment	-
Tooth Surface Finish	Milled
Precision Grade	GB 9
Ends Machined for Continous Linking	

Racks #	Module	L	B	H	h	No. of Teeth	f	±fpt (μm)	Fp (μm)	Weight (kg)
SSR1.5-100E	1.5	999.03	15	20	18.5	212	-	28	265	2.20
SSR2-100E	2	1005.31	20	25	23.0	160	-	28	335	3.70
SSR2.5-100E	2.5	1005.31	25	30	27.5	128	-	28	335	5.50
SSR3-100E	3	999.03	30	35	32.0	106	-	28	265	7.60
SSR4-100E	4	1005.31	40	45	41.0	80	-	40	335	13.10

Note: 1. ±fpt: Single pitch deviation.
 2. Fp: Total cumulative pitch deviation.

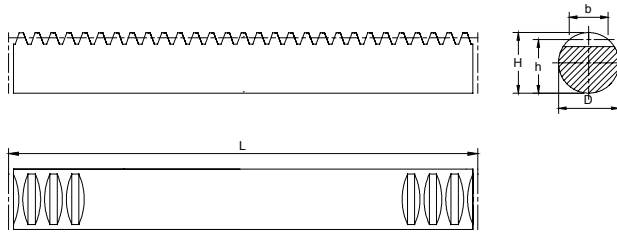


Specifications	
Pressure Angle	20°
Material	SS303
Heat Treatment	-
Tooth Surface Treatment	-
Tooth Surface Finish	Milled
Precision Grade	GB 9
Ends Not Machined	

Racks #	Module	L	B	H	h	No.of Teeth	f	±f _{pt} (μm)	F _p (μm)	Weight (kg)
SSR0.5-020	0.5	200	3	10	9.5	127	-	20	45	0.04
SSR0.5-030	0.5	300	5	9.5	9	191	-	20	50	0.10
SSR0.5-050	0.5	505	8	10	9.5	321	-	20	55	0.30
SSR0.75-020	0.75	200	3	10	9.3	84	-	20	50	0.04
SSR0.75-05	0.75	505	8	10	9.3	214	-	20	60	0.29
SSR0.8-020	0.8	200	7	7	6.2	79	-	20	50	0.07
SSR0.8-050	0.8	505	7	10	9.2	201	-	20	55	0.25
SSR1-030	1	300	10	10	9	95	-	28	150	0.21
SSR1-050	1	505	10	12	11	159	-	28	212	0.42
SSR1.5-050	1.5	505	15	20	18.5	105	-	28	212	1.20
SSR1.5-100	1.5	1010	15	20	18.5	212	-	28	335	2.20
SSR2-050	2	505	20	25	23	79	-	28	212	1.80
SSR2-100	2	1010	20	25	23	160	-	28	335	3.60
SSR2.5-050	2.5	505	25	30	27.5	63	-	28	212	2.70
SSR2.5-100	2.5	1010	25	30	27.5	128	-	28	335	5.30
SSR3-050	3	505	30	35	32	52	-	28	212	3.80
SSR3-100	3	1010	30	35	32	106	-	28	335	7.60
SSR4-050	4	505	40	45	41	39	-	40	212	6.60
SSR4-100	4	1010	40	45	41	80	-	40	335	13.10

Note: 1. ±f_{pt}: Single pitch deviation.
 2. F_p: Total cumulative pitch deviation.

Note:
 1 All dimensions are in inches.
 2 Dimensions and other engineering data are subject to change. Certified specifications are available on request.



Specifications	
Pressure Angle	20°
Material	C45
Heat Treatment	Quenched and Tempered
Tooth Surface Treatment	-
Tooth Surface Finish	Milled
Precision Grade	GB 8+
Ends Machined for Continuous Linking	

Racks #	Module	L	D h6	b	H	h	No.of Teeth	±f _{pt} (μm)	F _p (μm)	F _p 300 (μm)	Weight (kg)
SRR1-100QE	1	999.0	10	6.0	10	9.0	318	20	110	70	1.35
SRR1.5-100QE	1.5	999.0	15	10.0	15	13.5	212	20	110	70	1.70
SRR2-100QE	2	999.0	20	12.0	20	18.0	159	20	110	70	2.20
SRR2.5-100QE	2.5	997.5	25	15.0	25	22.5	127	20	110	70	3.60
SRR3-100QE	3	999.0	30	18.0	30	27.0	106	20	110	70	5.10
SRR4-100QE	4	1005.3	40	24.0	40	36.0	80	28	110	70	9.10
SRR5-100QE	5	1005.3	50	30.0	50	45.0	64	28	110	70	14.30

Note: 1. ±f_{pt}: Single pitch deviation.

2. F_p: Total cumulative pitch deviation.

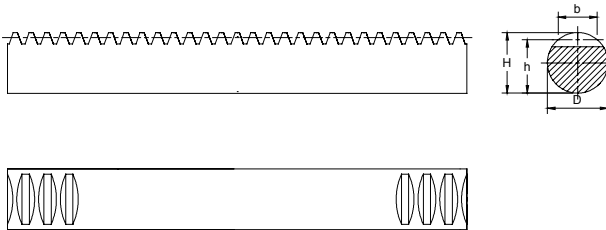
3. F_{p300}: Total Pitch Error, i.e. The maximum permissible deviation (per 300mm) of measured length of the rack compared to the theoretical length L₃₀₀.

4. GB 8+ means the precision grade of racks are better than GB 8.

Note:

1 All dimensions are in inches.

2 Dimensions and other engineering data are subject to change. Certified specifications are available on request.

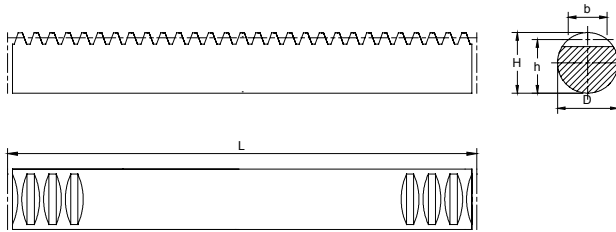


Specifications	
Pressure Angle	20°
Material	C45
Heat Treatment	Quenched and Tempered
Tooth Surface Treatment	-
Tooth Surface Finish	Milled
Precision Grade	GB 8
Ends Not Machined	

Racks #	Module	L	D _{h9}	b	H	h	No. of Teeth	±f _{pt} (μm)	F _p (μm)	Weight (kg)
SRR1-050Q	1	505	10	7.5	10	9.0	159	20	150	0.29
SRR1.5-050Q	1.5	505	15	9.6	15	13.5	105	20	150	0.65
SRR2-050Q	2	505	20	12.0	20	18.0	79	20	150	1.10
SRR2-100Q	2	1010	20	12.0	20	18.0	159	20	240	2.30
SRR2.5-050Q	2.5	505	25	15.0	25	22.5	63	20	150	1.80
SRR2.5-100Q	2.5	1010	25	15.0	25	22.5	127	20	240	3.60
SRR3-050Q	3	505	30	18.0	30	27.0	52	20	150	2.60
SRR3-100Q	3	1010	30	18.0	30	27.0	105	20	240	5.20
SRR4-050Q	4	505	40	24.0	40	36.0	39	28	150	4.60
SRR4-100Q	4	1010	40	24.0	40	36.0	79	28	240	9.00
SRR5-100Q	5	1010	50	30.0	50	45.0	63	28	240	14.30

Note: 1. ±f_{pt}: Single pitch deviation.
 2. F_p: Total cumulative pitch deviation.

Note:
 1 All dimensions are in inches.
 2 Dimensions and other engineering data are subject to change. Certified specifications are available on request.



Specifications	
Pressure Angle	20°
Material	C45
Heat Treatment	-
Tooth Surface Treatment	-
Tooth Surface Finish	Milled
Precision Grade	GB 9
Ends Machined for Continuous Linking	

Racks #	Module	L	D _{h11}	b	H	h	No. of Teeth	±f _{pt} (μm)	F _p (μm)	Weight (kg)
SRR1-020E	1	251.3	15	7.5	15	14.0	80	28	150	0.34
SRR1-050E	1	499.5	15	7.5	15	14.0	159	28	212	0.65
SRR1-100E	1	999.0	15	7.5	15	14.0	318	28	265	1.35
SRR1.5-020E	1.5	249.8	17	9.6	17	15.5	53	28	150	0.42
SRR1.5-050E	1.5	499.5	17	9.6	17	15.5	106	28	212	0.84
SRR1.5-100E	1.5	999.0	17	9.6	17	15.5	212	28	265	1.70
SRR2-020E	2	251.3	20	12.0	20	18.0	40	28	150	0.55
SRR2-050E	2	502.7	20	12.0	20	18.0	80	28	212	1.10
SRR2-100E	2	999.0	20	12.0	20	18.0	159	28	265	2.20
SRR2.5-020E	2.5	251.3	25	15.0	25	22.5	32	28	150	0.90
SRR2.5-050E	2.5	502.7	25	15.0	25	22.5	64	28	212	1.80
SRR2.5-100E	2.5	997.5	25	15.0	25	22.5	127	28	265	3.60
SRR3-020E	3	254.5	30	18.0	30	27.0	27	28	150	1.30
SRR3-050E	3	499.5	30	18.0	30	27.0	53	28	212	2.50
SRR3-100E	3	999.0	30	18.0	30	27.0	106	28	265	5.10
SRR4-020E	4	251.3	40	24.0	40	36.0	20	40	150	2.30
SRR4-050E	4	502.6	40	24.0	40	36.0	40	40	212	4.50
SRR4-100E	4	1005.3	40	24.0	40	36.0	80	40	335	9.10
SRR5-020E	5	251.3	50	30.0	50	45.0	16	40	150	3.80
SRR5-050E	5	502.6	50	30.0	50	45.0	32	40	212	7.10
SRR5-100E	5	1005.3	50	30.0	50	45.0	64	40	335	14.30

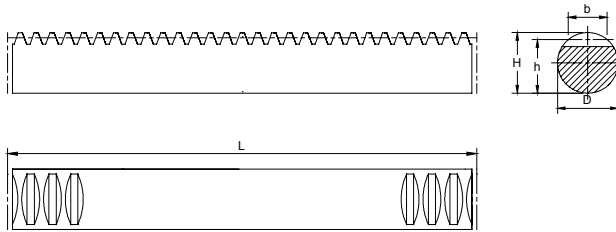
 Note: 1. ±f_{pt}: Single pitch deviation.

 2. F_p: Total cumulative pitch deviation.

Note:

1 All dimensions are in inches.

2 Dimensions and other engineering data are subject to change. Certified specifications are available on request.



Specifications	
Pressure Angle	20°
Material	SS303
Heat Treatment	-
Tooth Surface Treatment	-
Tooth Surface Finish	Milled
Precision Grade	GB 8+
Ends Machined for Continuous Linking	

Racks #	Module	L	D _{h9}	b	H	h	No. of Teeth	±f _{pt} (μm)	F _p (μm)	F _{p300} (μm)	Weight (kg)
SSRR1-100E	1	999.0	10	6	9.9	8.9	318	20	110	70	1.35
SSRR1.5-100E	1.5	999.0	15	9	14.9	13.4	212	20	110	70	1.70
SSRR2-100E	2	999.0	20	12	19.8	17.8	159	20	110	70	2.20
SSRR3-100E	3	999.0	30	18	29.8	26.8	106	20	110	70	5.10

Note: 1. ±f_{pt}: Single pitch deviation.

2. F_p: Total cumulative pitch deviation.

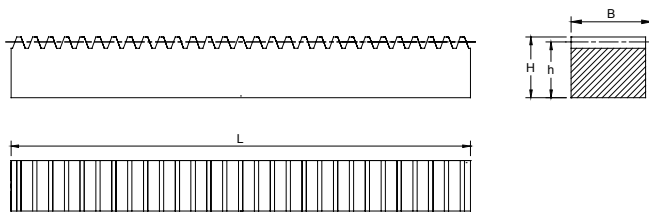
3. F_{p300}: Total Pitch Error, i.e. The maximum permissible deviation (per 300mm) of measured length of the rack compared to the theoretical length L₃₀₀.

4. GB 8+ means the precision grade of racks are better than GB 8.

Note:

1 All dimensions are in inches.

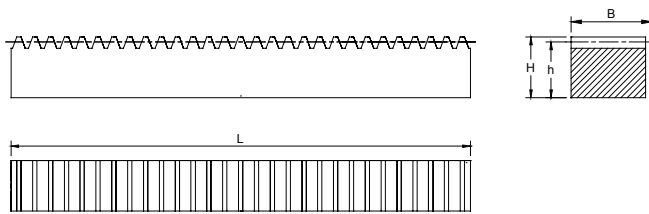
2 Dimensions and other engineering data are subject to change. Certified specifications are available on request.



Specifications	
Pressure Angle	14.5°
Material	C45
Heat Treatment	-
Tooth Surface Treatment	-
Tooth Surface Finish	Milled
Precision Grade	Commercial
Ends Not Machined	

Racks #	DP	Pitch	L	B	H	h	Weight (Lbs)
PSRDP3-24	3	1.047	24	3.000	1.500	1.167	24.00
PSRDP3-48	3	1.047	48	3.000	1.500	1.167	48.00
PSRDP3-72	3	1.047	72	3.000	1.500	1.167	72.00
PSRDP4-24	4	0.785	24	2.000	1.500	1.250	17.40
PSRDP4-48	4	0.785	48	2.000	1.500	1.250	34.80
PSRDP4-72	4	0.785	72	2.000	1.500	1.250	52.20
PSRDP4-24	4	0.785	24	2.000	2.000	1.750	23.60
PSRDP4-48	4	0.785	48	2.000	2.000	1.750	47.20
PSRDP4-72	4	0.785	72	2.000	2.000	1.750	70.80
PSRDP5-24	5	0.628	24	1.750	1.250	1.050	12.80
PSRDP5-48	5	0.628	48	1.750	1.250	1.050	25.60
PSRDP5-72	5	0.628	72	1.750	1.250	1.050	38.40
PSRDP5-24	5	0.628	24	1.750	1.250	1.300	16.00
PSRDP5-48	5	0.628	48	1.750	1.250	1.300	32.00
PSRDP5-72	5	0.628	72	1.750	1.250	1.300	48.00
PSRDP6-24	6	0.524	24	1.500	1.000	0.833	8.60
PSRDP6-48	6	0.524	48	1.500	1.000	0.833	17.20
PSRDP6-72	6	0.524	72	1.500	1.000	0.833	25.80
PSRDP6-24	6	0.524	24	1.500	1.250	1.333	13.80
PSRDP6-48	6	0.524	48	1.500	1.250	1.333	27.60
PSRDP6-72	6	0.524	72	1.500	1.250	1.333	41.40
PSRDP8-24	8	0.393	24	1.250	0.750	0.625	5.20
PSRDP8-48	8	0.393	48	1.250	0.750	0.625	10.40
PSRDP8-72	8	0.393	72	1.250	0.750	0.625	15.60
PSRDP8-24	8	0.393	24	1.250	1.250	1.125	9.80
PSRDP8-48	8	0.393	48	1.250	1.250	1.125	19.60
PSRDP8-72	8	0.393	72	1.250	1.250	1.125	29.40

Note:
 1 All dimensions are in inches.
 2 Dimensions and other engineering data are subject to change. Certified specifications are available on request.



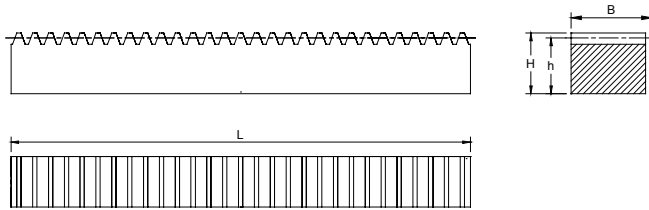
Specifications	
Pressure Angle	14.5°
Material	C45
Heat Treatment	-
Tooth Surface Treatment	-
Tooth Surface Finish	Milled
Precision Grade	Commercial
Ends Not Machined	

Racks #	DP	Pitch	L	B	H	h	Weight (Lbs)
PSRDP10-24	10	0.314	24	1.000	0.625	0.525	3.60
PSRDP10-48	10	0.314	48	1.000	0.625	0.525	7.20
PSRDP10-72	10	0.314	72	1.000	0.625	0.525	10.80
PSRDP10-24	10	0.314	24	1.000	1.000	0.900	6.00
PSRDP10-48	10	0.314	48	1.000	1.000	0.900	12.00
PSRDP10-72	10	0.314	72	1.000	1.000	0.900	18.00
PSRDP12-24	12	0.262	24	0.750	0.500	0.417	2.00
PSRDP12-48	12	0.262	48	0.750	0.500	0.417	4.00
PSRDP12-72	12	0.262	72	0.750	0.500	0.417	6.00
PSRDP12-24	12	0.262	24	0.750	0.750	0.667	3.40
PSRDP12-48	12	0.262	48	0.750	0.750	0.667	6.80
PSRDP12-72	12	0.262	72	0.750	0.750	0.667	10.20
PSRDP16-24	16	0.196	24	0.313	0.313	0.250	0.50
PSRDP16-48	16	0.196	48	0.313	0.313	0.250	1.00
PSRDP16-72	16	0.196	72	0.313	0.313	0.250	1.50
PSRDP16-24	16	0.196	24	0.500	0.500	0.438	1.52
PSRDP16-48	16	0.196	48	0.500	0.500	0.438	3.04
PSRDP16-72	16	0.196	72	0.500	0.500	0.438	4.56
PSRDP20-24	20	0.157	24	0.375	0.375	0.325	0.84
PSRDP20-48	20	0.157	48	0.375	0.375	0.325	1.68
PSRDP20-72	20	0.157	72	0.375	0.375	0.325	2.52
PSRDP24-24	24	0.131	24	0.250	0.250	0.208	0.38
PSRDP24-48	24	0.131	48	0.250	0.250	0.208	0.76
PSRDP24-72	24	0.131	72	0.250	0.250	0.208	1.14

Note:

1 All dimensions are in inches.

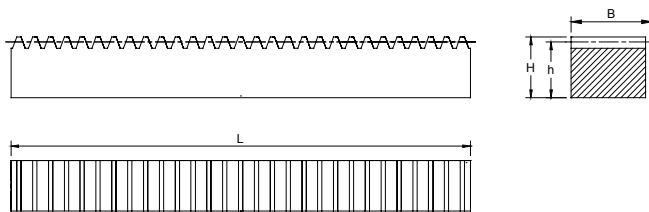
2 Dimensions and other engineering data are subject to change. Certified specifications are available on request.



Specifications	
Pressure Angle	20°
Material	C45
Heat Treatment	-
Tooth Surface Treatment	-
Tooth Surface Finish	Milled
Precision Grade	Commercial
Ends Not Machined	

Racks #	DP	Pitch	L	B	H	h	Weight (Lbs)
SRDP3-24	3	1.047	24	3.000	1.500	1.167	24.00
SRDP3-48	3	1.047	48	3.000	1.500	1.167	48.00
SRDP3-72	3	1.047	72	3.000	1.500	1.167	72.00
SRDP4-24	4	0.785	24	2.000	1.500	1.250	17.40
SRDP4-48	4	0.785	48	2.000	1.500	1.250	34.80
SRDP4-72	4	0.785	72	2.000	1.500	1.250	52.20
SRDP5-24	5	0.628	24	1.750	1.250	1.050	12.80
SRDP5-48	5	0.628	48	1.750	1.250	1.050	25.60
SRDP5-72	5	0.628	72	1.750	1.250	1.050	38.40
SRDP6-24	6	0.524	24	1.500	1.250	1.333	13.80
SRDP6-48	6	0.524	48	1.500	1.250	1.333	27.60
SRDP6-72	6	0.524	72	1.500	1.250	1.333	41.40
SRDP8-24	8	0.393	24	1.250	1.250	1.125	9.80
SRDP8-48	8	0.393	48	1.250	1.250	1.125	19.60
SRDP8-72	8	0.393	72	1.250	1.250	1.125	29.40
SRDP10-24	10	0.314	24	1.000	1.000	0.900	6.00
SRDP10-48	10	0.314	48	1.000	1.000	0.900	12.00
SRDP10-72	10	0.314	72	1.000	1.000	0.900	18.00
SRDP12-24	12	0.262	24	0.750	0.750	0.667	3.40
SRDP12-48	12	0.262	48	0.750	0.750	0.667	6.80
SRDP12-72	12	0.262	72	0.750	0.750	0.667	10.20
SRDP16-24	16	0.196	24	0.500	0.500	0.438	1.52
SRDP16-48	16	0.196	48	0.500	0.500	0.438	3.04
SRDP16-72	16	0.196	72	0.500	0.500	0.438	4.56
SRDP20-24	20	0.157	24	0.375	0.375	0.325	0.84
SRDP20-48	20	0.157	48	0.375	0.375	0.325	1.68
SRDP20-72	20	0.157	72	0.375	0.375	0.325	2.52

Note:
 1 All dimensions are in inches.
 2 Dimensions and other engineering data are subject to change. Certified specifications are available on request.



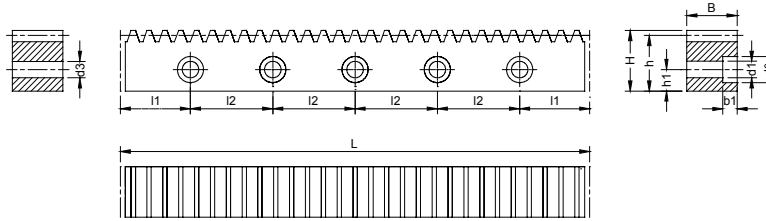
Specifications	
Pressure Angle	20°
Material	C45
Heat Treatment	-
Tooth Surface Treatment	-
Tooth Surface Finish	Milled
Precision Grade	Commercial
Ends Not Machined	

Racks #	DP	Pitch	L	B	H	h	Weight (Lbs)
SRDP4-24W	4	0.785	24	3.500	2.000	1.750	41.00
SRDP4-48W	4	0.785	48	3.500	2.000	1.750	82.00
SRDP4-72W	4	0.785	72	3.500	2.000	1.750	123.00
SRDP5-24W	5	0.628	24	3.500	1.500	1.300	22.40
SRDP5-48W	5	0.628	48	3.500	1.500	1.300	44.80
SRDP5-72W	5	0.628	72	3.500	1.500	1.300	67.20
SRDP6-24W	6	0.524	24	2.000	1.500	1.333	17.00
SRDP6-48W	6	0.524	48	2.000	1.500	1.333	34.00
SRDP6-72W	6	0.524	72	2.000	1.500	1.333	51.00
SRDP8-24W	8	0.393	24	1.500	1.500	1.375	13.80
SRDP8-48W	8	0.393	48	1.500	1.500	1.375	27.60
SRDP8-72W	8	0.393	72	1.500	1.500	1.375	41.30
SRDP10-24W	10	0.314	24	1.250	1.250	1.150	9.00
SRDP10-48W	10	0.314	48	1.250	1.250	1.150	18.00
SRDP10-72W	10	0.314	72	1.250	1.250	1.150	27.00
SRDP12-24W	12	0.262	24	1.000	1.000	0.917	6.40
SRDP12-48W	12	0.262	48	1.000	1.000	0.917	12.80
SRDP12-72W	12	0.262	72	1.000	1.000	0.917	19.20
SRDP16-24W	16	0.196	24	0.750	0.750	0.688	3.40
SRDP16-48W	16	0.196	48	0.750	0.750	0.688	6.80
SRDP16-72W	16	0.196	72	0.750	0.750	0.688	10.20
SRDP20-24W	20	0.157	24	0.500	0.500	0.450	0.80
SRDP20-48W	20	0.157	48	0.500	0.500	0.450	1.60
SRDP20-72W	20	0.157	72	0.500	0.500	0.450	2.50

Note:

1 All dimensions are in inches.

2 Dimensions and other engineering data are subject to change. Certified specifications are available on request.

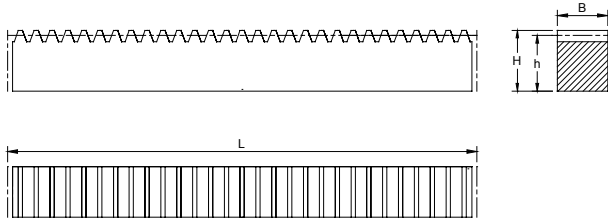


Specifications	
Pressure Angle	20°
Material	C45
Heat Treatment	Stress Relief Annealing
Tooth Surface Treatment	-
Tooth Surface Finish	Milled
Precision Grade	GB 8
Ends Machined for Continous Linking	

Racks #	Pitch	Module	L	B	H	h	No.of Teeth	l1	l2	b1	h1	d1	d2	No.of Holes	±fpt (μm)	Fp (μm)	Weight (kg)
SRCP5-100SB	5	1.591	1000	15	20	18.41	200	50	180	6	8	6	10	6	20	190	2.10
SRCP5-150SB	5	1.591	1500	15	20	18.41	300	30	180	6	8	6	10	9	20	240	3.20
SRCP5-200SB	5	1.591	2050	15	20	18.41	410	35	180	6	8	6	10	12	20	280	4.40
SRCP10-100SB	10	3.183	1000	30	35	31.82	100	50	180	11	14	11	17.5	6	20	190	7.40
SRCP10-150SB	10	3.183	1500	30	35	31.82	150	30	180	11	14	11	17.5	9	20	240	11.00
SRCP10-200SB	10	3.183	2050	30	35	31.82	205	35	180	11	14	11	17.5	12	20	280	15.10
SRCP15-100SB	15	4.774	1005	50	50	45.23	67	62.5	220	16	20	16	23	5	28	240	17.20
SRCP15-150SB	15	4.774	1500	50	50	45.23	100	90	220	16	20	16	23	7	28	240	25.70
SRCP15-200SB	15	4.774	2040	50	50	45.23	136	30	220	16	20	16	23	10	28	280	34.80
SRCP20-100SB	20	6.366	1000	60	60	53.63	50	60	220	18	23	18	26	5	32	190	24.20
SRCP20-150SB	20	6.366	1500	60	60	53.63	75	90	220	18	23	18	26	7	32	240	36.40
SRCP20-200SB	20	6.366	2040	60	60	53.63	102	30	220	18	23	18	26	10	32	280	49.40

Note: 1. ±fpt: Single pitch deviation.
 2. Fp: Total cumulative pitch deviation.

Note:
 1 All dimensions are in inches.
 2 Dimensions and other engineering data are subject to change. Certified specifications are available on request.



Specifications	
Pressure Angle	20°
Material	C45
Heat Treatment	Stress Relief Annealing
Tooth Surface Treatment	-
Tooth Surface Finish	Milled
Precision Grade	GB 8
Ends Machined for Continuous Linking	

Racks #	Pitch	Module	L	B	H	h	No.of Teeth	±f _{pt} (μm)	F _p (μm)	Weight (kg)
SRCP5-100SE	5	1.591	1000	15	20	18.41	200	20	190	2.20
SRCP5-150SE	5	1.591	1500	15	20	18.41	300	20	240	3.20
SRCP5-200SE	5	1.591	2050	15	20	18.41	410	20	280	4.40
SRCP10-100SE	10	3.183	1000	30	35	31.82	100	20	190	7.60
SRCP10-150SE	10	3.183	1500	30	35	31.82	150	20	240	11.00
SRCP10-200SE	10	3.183	2050	30	35	31.82	205	20	280	15.10
SRCP15-100SE	15	4.774	1005	50	50	45.23	67	28	240	17.20
SRCP15-150SE	15	4.774	1500	50	50	45.23	100	28	240	25.70
SRCP15-200SE	15	4.774	2040	50	50	45.23	136	28	280	34.80
SRCP20-100SE	20	6.366	1000	60	60	53.63	50	32	190	24.20
SRCP20-150SE	20	6.366	1500	60	60	53.63	75	32	240	36.40
SRCP20-200SE	20	6.366	2040	60	60	53.63	102	32	280	49.40

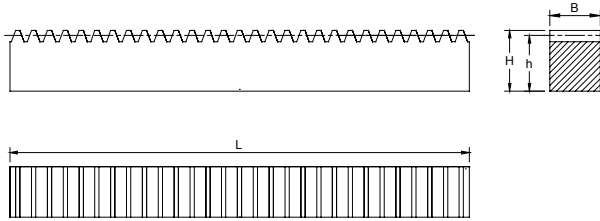
Note: 1. ±f_{pt}: Single pitch deviation.

2. F_p: Total cumulative pitch deviation.

Note:

1 All dimensions are in inches.

2 Dimensions and other engineering data are subject to change. Certified specifications are available on request.

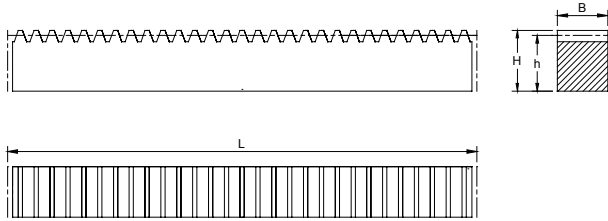


Specifications	
Pressure Angle	20°
Material	C45
Heat Treatment	Stress Relief Annealing
Tooth Surface Treatment	-
Tooth Surface Finish	Milled
Precision Grade	GB 8
Ends Not Machined	

Racks #	Pitch	Module	L	B	H	h	No.of Teeth	±f _{pt} (μm)	F _p (μm)	Weight (kg)
SRCP2.5-010S	2.5	0.795	98	10	12	11.2	38			1.10
SRCP2.5-100S	2.5	0.795	1010	10	12	11.2	402			1.10
SRCP5-010S	5	1.591	98	15	20	18.41	18	20	75	0.22
SRCP5-100S	5	1.591	1010	15	20	18.41	200	20	240	2.20
SRCP10-010S	10	3.183	98	30	35	31.82	8	20	75	0.75
SRCP10-100S	10	3.183	1010	30	35	31.82	100	20	240	7.60
SRCP15-010S	15	4.774	103	50	50	45.23	5	28	75	1.80
SRCP15-100S	15	4.774	1005	50	50	45.23	67	28	240	17.23
SRCP20-010S	20	6.366	98	60	60	53.63	3	32	75	2.50
SRCP20-100S	20	6.366	1000	60	60	53.63	50	32	240	24.20

Note: 1. ±f_{pt}: Single pitch deviation.
 2. F_p: Total cumulative pitch deviation.

Note:
 1 All dimensions are in inches.
 2 Dimensions and other engineering data are subject to change. Certified specifications are available on request.

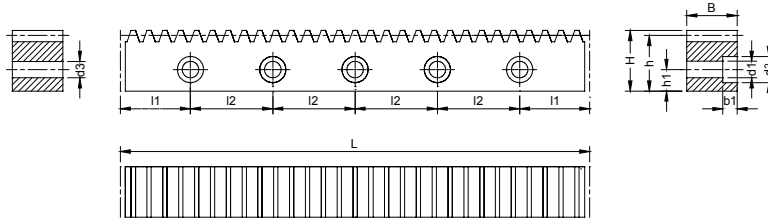


Specifications	
Pressure Angle	20°
Material	C45
Heat Treatment	Quenched and Tempered
Tooth Surface Treatment	-
Tooth Surface Finish	Milled
Precision Grade	GB 8
Ends Machined for Continuous Linking	

Racks #	Pitch	Module	L	B	H	h	No.of Teeth	±f _{pt} (μm)	F _p (μm)	Weight (kg)
SRCP5-100QE	5	1.591	1000	15	20	18.41	200	20	190	2.20
SRCP10-100QE	10	3.183	1000	30	35	31.82	100	20	190	7.50

Note: 1. ±f_{pt}: Single pitch deviation.
 2. F_p: Total cumulative pitch deviation.

Note:
 1 All dimensions are in inches.
 2 Dimensions and other engineering data are subject to change. Certified specifications are available on request.

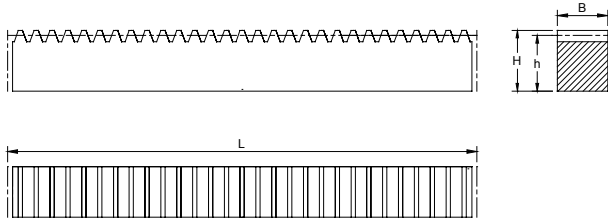


Specifications	
Pressure Angle	20°
Material	SS303
Heat Treatment	-
Tooth Surface Treatment	-
Tooth Surface Finish	Milled
Precision Grade	GB 8
Ends Machined for Continous Linking	

Racks #	Pitch	Module	L	B	H	h	No.of Teeth	l1	l2	b1	h1	d1	d2	No.of Holes	±f _{pt} (μm)	F _p (μm)	Weight (kg)
SSRCP5-100B	5	1.591	1000	15	20	18.41	200	50	180	6	8	6	10	6	20	190	2.10
SSRCP10-100B	10	3.183	1000	30	35	31.82	100	50	180	11	14	11	17.5	6	20	190	7.40

Note: 1. ±f_{pt}: Single pitch deviation.
 2. F_p: Total cumulative pitch deviation.

Note:
 1 All dimensions are in inches.
 2 Dimensions and other engineering data are subject to change. Certified specifications are available on request.

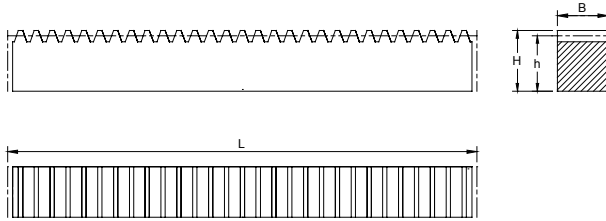


Specifications	
Pressure Angle	20°
Material	SS303
Heat Treatment	-
Tooth Surface Treatment	-
Tooth Surface Finish	Milled
Precision Grade	GB 8
Ends Machined for Continuous Linking	

Packs #	Pitch	Module	L	B	H	h	No.of Teeth	±f _{pt} (μm)	F _p (μm)	Weight (kg)
SSRCP5-100E	5	1.591	1000	15	20	18.41	200	20	190	2.20
SSRCP10-100E	10	3.183	1000	30	35	31.82	100	20	190	7.60

Note: 1. ±f_{pt}: Single pitch deviation.
 2. F_p: Total cumulative pitch deviation.

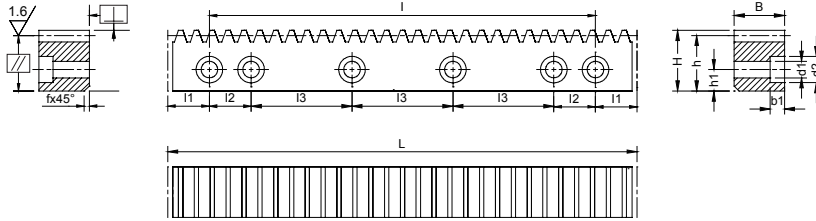
Note:
 1 All dimensions are in inches.
 2 Dimensions and other engineering data are subject to change. Certified specifications are available on request.



Specifications	
Pressure Angle	20°
Material	C45
Heat Treatment	-
Tooth Surface Treatment	-
Tooth Surface Finish	Milled
Precision Grade	GB 9
Ends Machined for Continuous Linking	

Racks #	Pitch	Module	L	B	H	h	No.of Teeth	±f _{pt} (μm)	F _p (μm)	Weight (kg)
SRCP5-020E	5	1.591	250	15	14.8	13.2	50	28	150	0.39
SRCP5-050E	5	1.591	500	15	14.8	13.2	100	28	212	0.78
SRCP5-100E	5	1.591	1000	15	14.8	13.2	200	28	265	1.55
SRCP10-020E	10	3.183	250	30	29.7	26.5	25	28	150	1.55
SRCP10-050E	10	3.183	500	30	29.7	26.5	50	28	212	3.10
SRCP10-100E	10	3.183	1000	30	29.7	26.5	100	28	265	6.20
SRCP10-200E	10	3.183	2000	30	29.7	26.5	200	28	400	12.40

Note: 1. ±f_{pt}: Single pitch deviation.
 2. F_p: Total cumulative pitch deviation.

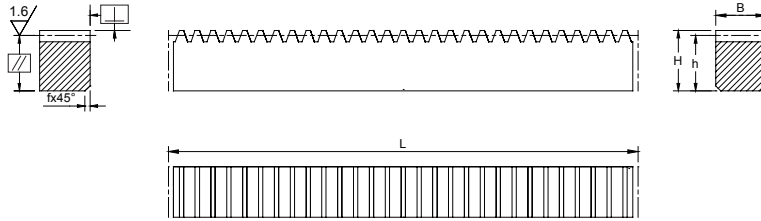


Specifications	
Pressure Angle	20°
Material	C45
Heat Treatment	-
Tooth Surface Treatment	Induction Hardened
Tooth Surface Finish	Milled
Precision Grade	GB 9
Ends Machined for Continous Linking	

Packs #	Pitch	Module	L	B	H	h	No.of Teeth	l1	l2	l3	b1	h1	d1	d2	f	No.of Holes	±f _{pt} (μm)	F _p (μm)	Weight (kg)
SRCP10-080HB	10	3.183	800	29	29	25.82	80	25	25	100	9	11.5	9	15	2	10	28	265	4.80
SRCP10-120HB	10	3.183	1200	29	29	25.82	120	25	25	100	9	11.5	9	15	2	14	28	335	7.20
SRCP10-200HB	10	3.183	2000	29	29	25.82	200	25	25	100	9	11.5	9	15	2	22	28	400	12.00
SRCP12.5-080HB	12.5	3.979	800	39	39	35.02	64	25	25	100	9	11.5	9	15	2	10	28	265	9.80
SRCP12.5-120HB	12.5	3.979	1200	39	39	35.02	96	25	25	100	9	11.5	9	15	2	14	40	335	13.50
SRCP12.5-200HB	12.5	3.979	2000	39	39	35.02	160	25	25	100	11	14.0	11	18	2	22	40	400	22.50
SRCP16-080HB	16	5.093	800	49	49	43.91	50	25	25	100	9	11.5	9	15	2	10	40	265	14.20
SRCP16-120HB	16	5.093	1200	49	49	43.91	75	25	25	100	9	11.5	9	15	2	14	40	335	21.20
SRCP16-200HB	16	5.093	2000	49	49	43.91	125	25	25	100	13	24.0	13.5	20	2	22	40	400	35.30
SRCP20-080HB	20	6.366	800	59	59	52.63	40	25	25	100	9	11.5	9	15	2	10	45	265	20.20
SRCP20-120HB	20	6.366	1200	59	59	52.63	60	25	25	100	9	11.5	9	15	2	14	45	335	30.30
SRCP20-200HB	20	6.366	2000	59	59	52.63	100	25	25	100	13	29.0	13.5	20	2	22	45	400	50.50
SRCP25-080HB	25	7.958	800	79	79	71.04	32	25	25	100	9	11.5	9	15	2	10	45	265	35.70
SRCP25-120HB	25	7.958	1200	79	79	71.04	48	25	25	100	9	11.5	9	15	2	14	45	335	53.60
SRCP25-200HB	25	7.958	2000	79	79	71.04	80	25	25	100	17.5	39.0	17.5	26	2	22	45	400	89.30

Note: 1. ±f_{pt}: Single pitch deviation.
 2. F_p: Total cumulative pitch deviation.

Note:
 1 All dimensions are in inches.
 2 Dimensions and other engineering data are subject to change. Certified specifications are available on request.



Specifications	
Pressure Angle	20°
Material	C45
Heat Treatment	-
Tooth Surface Treatment	Induction Hardened
Tooth Surface Finish	Milled
Precision Grade	GB 9
Ends Machined for Continous Linking	

Racks #	Pitch	Module	L	B	H	h	f	No. of Teeth	±f _{pt} (μm)	F _p (μm)	Weight (kg)
SRCP10-080HE	10	3.183	800	29	29	25.82	2	80	28	265	4.80
SRCP10-120HE	10	3.183	1200	29	29	25.82	2	120	28	335	7.20
SRCP10-200HE	10	3.183	2000	29	29	25.82	2	200	28	400	12.00
SRCP12.5-080HE	12.5	3.979	800	39	39	35.02	2	64	28	265	9.80
SRCP12.5-120HE	12.5	3.979	1200	39	39	35.02	2	96	40	335	13.50
SRCP12.5-200HE	12.5	3.979	2000	39	39	35.02	2	160	40	400	22.50
SRCP16-080HE	16	5.093	800	49	49	43.91	2	50	40	265	14.20
SRCP16-120HE	16	5.093	1200	49	49	43.91	2	75	40	335	21.20
SRCP16-200HE	16	5.093	2000	49	49	43.91	2	125	40	400	35.30
SRCP20-080HE	20	6.366	800	59	59	52.63	2	40	45	265	20.20
SRCP20-120HE	20	6.366	1200	59	59	52.63	2	60	45	335	30.30
SRCP20-200HE	20	6.366	2000	59	59	52.63	2	100	45	400	50.50
SRCP25-080HE	25	7.958	800	79	79	71.04	2	32	45	265	35.70
SRCP25-120HE	25	7.958	1200	79	79	71.04	2	48	45	335	53.60
SRCP25-200HE	25	7.958	2000	79	79	71.04	2	80	45	400	89.30

Note: 1. ±f_{pt}: Single pitch deviation.
 2. F_p: Total cumulative pitch deviation.

Note:
 1 All dimensions are in inches.
 2 Dimensions and other engineering data are subject to change. Certified specifications are available on request.